

FLOOR PLANS

MAIN ENTRANCE

Available spaces at Romanby Golf & Country Club

THE CRAVEN SUITE

10.4m x 13m

Multi-purpose room suitable for conference and training seminars, celebrations, parties and weddings.

This room may be used in conjunction with the reception area, however some degree of privacy is lost if this option is chosen. It is suitable to host 60 delegate style and 90 people theatre style.

GOLFERS BAR

8.6m x 6m

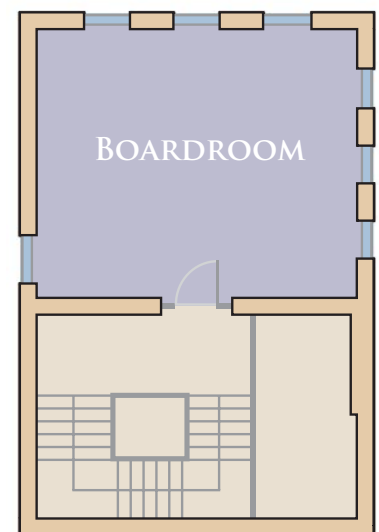
This room is not usually available for booking as it provides food and beverages for members and the general public.

GOLFERS LOUNGE

5.3m x 5.3m

This room is not usually available for booking as it is annexed to the Golfers Bar.

BOARDROOM



THE BOARDROOM

5m x 5m approx.

This room is on the first floor and has limited access. It is suitable for smaller meetings of up to 16 persons boardroom style, or up to 20 persons theatre style.

